

# ISSS Newsletter

## Fall 2009, Issue 2

### Special points of interest:

- International Student Insurance
- Insurance waiver reminder
- Electronic Visa Diversity Lottery - *Apply Now*
- "Let's Talk" - Are you stressed?
- African Movie Night and Free African Food
- Free Admission to the Portland Art Museum

### Are you wondering about your

### HEALTH INSURANCE?

or about an

### INSURANCE WAIVER?

Remember that all international students in F-1 and J-1 status at PSU are required to have the Supplemental Health Insurance Plan unless they qualify for a waiver. Charges will be added to students' accounts during the fourth week of classes. For more information about the cost of the Supplemental Health Insurance Plan and who qualifies for a waiver, please visit:

[http://oia.pdx.edu/intl\\_students/insurance/](http://oia.pdx.edu/intl_students/insurance/)

Please remember that the insurance waiver deadline is Monday, October 12th. Waivers are required for both new students and returning students who had a waiver last year. No waivers will be possible after October 12th, and students who do not file a waiver will be charged for the PSU Supplemental Health Insurance.

To request an insurance waiver you must complete two steps:

#### Step 1:

Go online to <https://studentinsurance.wellsfargo.com/waivers/OnlineWaiver.aspx?pagetype=AUTH&waivename=psu> and complete a waiver request. **This request must be completed by the deadline of October 12th.** Make sure to read the confirmation page after submitting your request very carefully for further instructions.

#### Step 2:

Submit proof of your insurance coverage **within 10 business days** of filing your request online. You may submit proof of your insurance in three different ways:

- a. You may e-mail a scanned copy of your insurance documents to [intlins@pdx.edu](mailto:intlins@pdx.edu)
- b. You may fax a copy of your insurance documents to 503-725-5812
- c. You may take a photocopy of your insurance documents to the Center for Student Health and Counseling (SHAC / UCB 200)

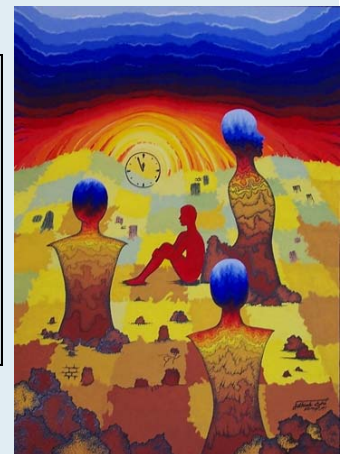
If you do not submit the waiver request before October 12th or you do not submit your insurance documents within 10 business days of requesting a waiver at the website above, you will be charged for the PSU Supplemental Health Insurance Plan for the Fall term.

### Portland Art Museum FREE Admission For ALL Sunday, November 8th

The third in an ongoing series of free family days will feature Chinese dance, music, and food, along with art-making activities inspired by the three cities featured in [China Design Now](#). Visitors of all ages can build their own cities using recycled materials provided by the School and Community Reuse Action Project (SCRAP).

### International Student and Scholar Services ISSS

101 East Hall  
632 SW Hall Street  
Portland State University  
Web: [www.oia.pdx.edu](http://www.oia.pdx.edu)  
E-mail: [oia@pdx.edu](mailto:oia@pdx.edu)  
Phone: 503-725-4094  
Newsletter contact: [brozek@pdx.edu](mailto:brozek@pdx.edu)



# ISSS Newsletter Fall 2009, Issue 2

## "Let's Talk"

Free and off site confidential consultation for international students & support on a variety of issues.

**Wednesdays**

**1-4PM**

**EH 221**

"Let's Talk" is a place to talk about what's stressing you out (academic adjustment, family difficulties, depression, or financial pressures). No appointments necessary.

**Just drop in!**

Provided to you by SHAC

## Electronic Diversity Visa Lottery "Apply Now"

The U.S. Department of State Web site for the 2011 Diversity Visa Program (DV-2011) is now open. The entry submission period for DV-2011 is from 12:00PM on October 2, 2009 to 12:00PM on November 30, 2009. The entry form will only be available for submission during this period and this period only. Entries will not be accepted through the U.S. Postal Service.

For more information, go to:

<http://www.dvlottery.state.gov/>

## Join the International Student Coffee Hour!

**Every Wednesday (FALL Term)**

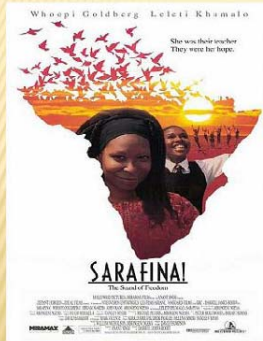
**3:30-5:30PM**

**Multicultural Center  
SMSU 228**

International Coffee Hour is welcoming all new students from all over the world! This event is sponsored by OIS and IELP.



## OIS MOVIE NIGHT!



× *When:*

Fri, Oct. 16th, 2009

× *Where:*

MCC i.e. SMSU 228

*Free Food*

× *Time:* 6pm-8pm



## Join our ISSS FACEBOOK Group!

**facebook**

Are you a FACEBOOK user? If so, please join our group, International Student and Scholar Services at PSU!

Look for: International Student Services at PSU

<http://www.facebook.com/home.php?#group.php?gid=74387503996>

We hope many of you can join the group!

## International Student and Scholar Services ISSS

101 East Hall  
632 SW Hall Street  
Portland State University  
Web: [www.oia.pdx.edu](http://www.oia.pdx.edu)  
E-mail: [oia@pdx.edu](mailto:oia@pdx.edu)  
Phone: 503-725-4094